



## Communication

- GPRS/SMS communication with backoffice server,
- License free radio communication RF: 867-869 MHz (by default) or 169 MHz, 433 MHz, 915 MHz (on request),
- Daily readouts, data archive, alarms, configuration,
- Over the air firmware upgrade,
- Opto Port for easy diagnostics.

## User friendly interface

- Graphic orientated display for current readout presentation, extensive diagnostics and easy installation process.

## Environment

- Robust design, secured with seals,
- Suitable for outdoor environment,
- Operational temperature -20°C to +55°C,
- Ingress protection IP56.

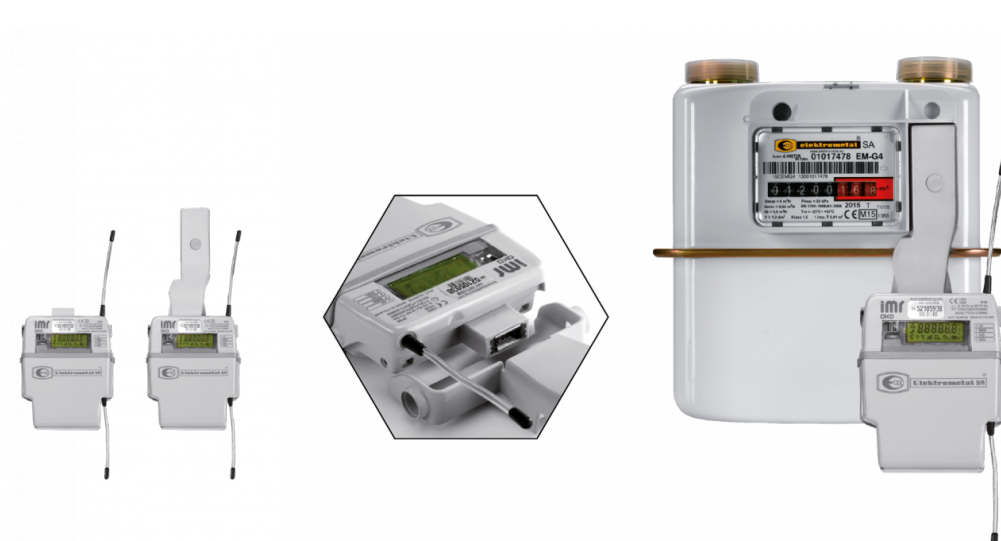
## Compliance

- ATEX certification (Zone 0 gas group B),
- IECEx,
- LVD,
- RTTE,
- EMC.

## Management system

- Backoffice server with database for readouts, configuration and devices,
- Communication management and different protocols support for system with thousands of devices,
- Browse current and historical data on the web, get email summary reports,
- Manage installation process, supervise and maintain high system performance.

## Montage



Elektrometal SA  
43-400 Cieszyn  
ul. Stawowa 71  
em@elektrometal.com.pl  
tel: +48 33 8575 200  
fax: +48 33 8575 205

[www.elektrometal.eu](http://www.elektrometal.eu)  
version of day: 2019-01-23